

TRACTION Learning Collaborative: January Webinar

JANUARY 2021

Agenda

1. Welcome back and recap of past webinars
2. Review of New PDSAs: ARA Glendale & University of Colorado
3. Review of Previous PDSAs: Gundersen & University of Iowa
4. Discussion: Virtual/In Person TTT
5. Data Review

New PDSAs

University of Colorado:

January PDSA

Title: RA Specific Note

PLAN

What is the objective for this cycle?

Increment TTT Documentation in all aspects

What do you predict will happen?

People will slowly adopt the new note template

What is the plan for the cycle? What are the steps to execute the cycle, including data collection (who, what, where, when)?

-Creation of a template note that contains all the elements of TTT (done)

-Meeting with EPIC specialist to adjust DAM(we still need that DAM shows up in note automatically once it has been filled by the provider)

DO

Carry out the cycle. What did you observe? Include descriptions of successful encounters, problems, and other special circumstances that may or may not have been part of the plan.

-2 People have use the existing note (myself and attending working with me on this)/ works well but the DAM does not auto populate.

-Meeting with EPIC specialist 1/12, this place communicated with staff/ encouraged not to carry forward old note but to use new template

STUDY

Summarize and analyze the observed results. What did you learn from this cycle?

In process

Do the results agree with the predictions you listed in the "Plan" phase? (circle one)

Yes

No

Other

ACT

What action are you going to take as a result of this cycle? (circle one)

Expand the Test

Adapt the Test

Abandon the Test

Plan for the next cycle. What changes are needed? If expanding or adapting, what will you do to continue your learning while beginning to spread the successes?

- Will expand the use of the note to the entire department

Arizona Arthritis and Rheumatology Associates- Glendale

January PDSA

Title: Tracking shared decision-making pertaining to the patient's RA treatment goal

PLAN

What is the objective for this cycle?

To assess each RA patients' goal of treatment and document it in the chart along with the shared decision making about what will be done to reach that goal.

What do you predict will happen?

Most charts will have this documented as there has already been 2 cycles pass of asking patients their goal and discussing the plan on how to achieve it.

What is the plan for the cycle? What are the steps to execute the cycle, including data collection (who, what, where, when)?

To ask the patient what their goal of RA treatment, document it in the impression of the chart, and then state the plan on how to get there based on shared decision making with the patient. Then monthly, to choose 24 charts each to review to assess if this process was carried out.

DO

Carry out the cycle. What did you observe? Include descriptions of successful encounters, problems, and other special circumstances that may or may not have been part of the plan.

It has still been quite quick to ask the patients goal of treatment and to document it in the impression. The shared decision-making aspect doesn't take too much longer as the patient is normally agreeable to actions needed to reach their chosen goal.

STUDY

Summarize and analyze the observed results. What did you learn from this cycle?

92% of the charts from the 3rd cycle had the goal and shared decision making on how to reach that goal documented in the impression in the chart. The process is still quick to ask the patient these questions. Patients are agreeable to the steps planned to reach their goal majority of the time.

Do the results agree with the predictions you listed in the "Plan" phase? (circle one)

Yes

No

ACT

What action are you going to take as a result of this cycle? (circle one)

Expand the Test

Adapt the Test

Abandon the Test

Plan for the next cycle. What changes are needed? If expanding or adapting, what will you do to continue your learning while beginning to spread the successes?

To continue documenting the patient's RA goal and the shared decision making agreed upon to reach that goal. This next cycle we will discuss with the patient that the CDAI will be used as a disease activity measurement and note this in the shared decision making area of the impression.

PDSA Progress: Gundersen

Gundersen Health System

PDSA-November/December

Title: R3 completion

PLAN

What is the objective for this cycle?

All patients will complete the R3 either by the time the provider enters the room, or shortly after

What do you predict will happen?

100% of patients will complete the R3 – should take less than 2 minutes – ideally by the time provider enters, or shortly thereafter – in other words - PROMPTLY.

What is the plan for the cycle? What are the steps to execute the cycle, including data collection (who, what, where, when)?

Goal: 100% of patients will have completed the R3 promptly.
Providers will document how many did/did not complete the R3 promptly.
Providers will communicate numbers to MB at the end of the day – Friday the 20th of November

DO

Carry out the cycle. What did you observe? Include descriptions of successful encounters, problems, and other special circumstances that may or may not have been part of the plan.

SB and MB kept track of R3 completion for their patients. some patients could not read the small print.

STUDY

Summarize and analyze the observed results. What did you learn from this cycle?

89% of patients completed the form by the time the provider started the visit. RF picked up a few pairs of reading glasses to keep in the rooms, so patients could use them as needed to complete the form.

Do the results agree with the predictions you listed in the “Plan” phase? (circle one)

Yes

No

ACT

What action are you going to take as a result of this cycle? (circle one)

Expand the Test

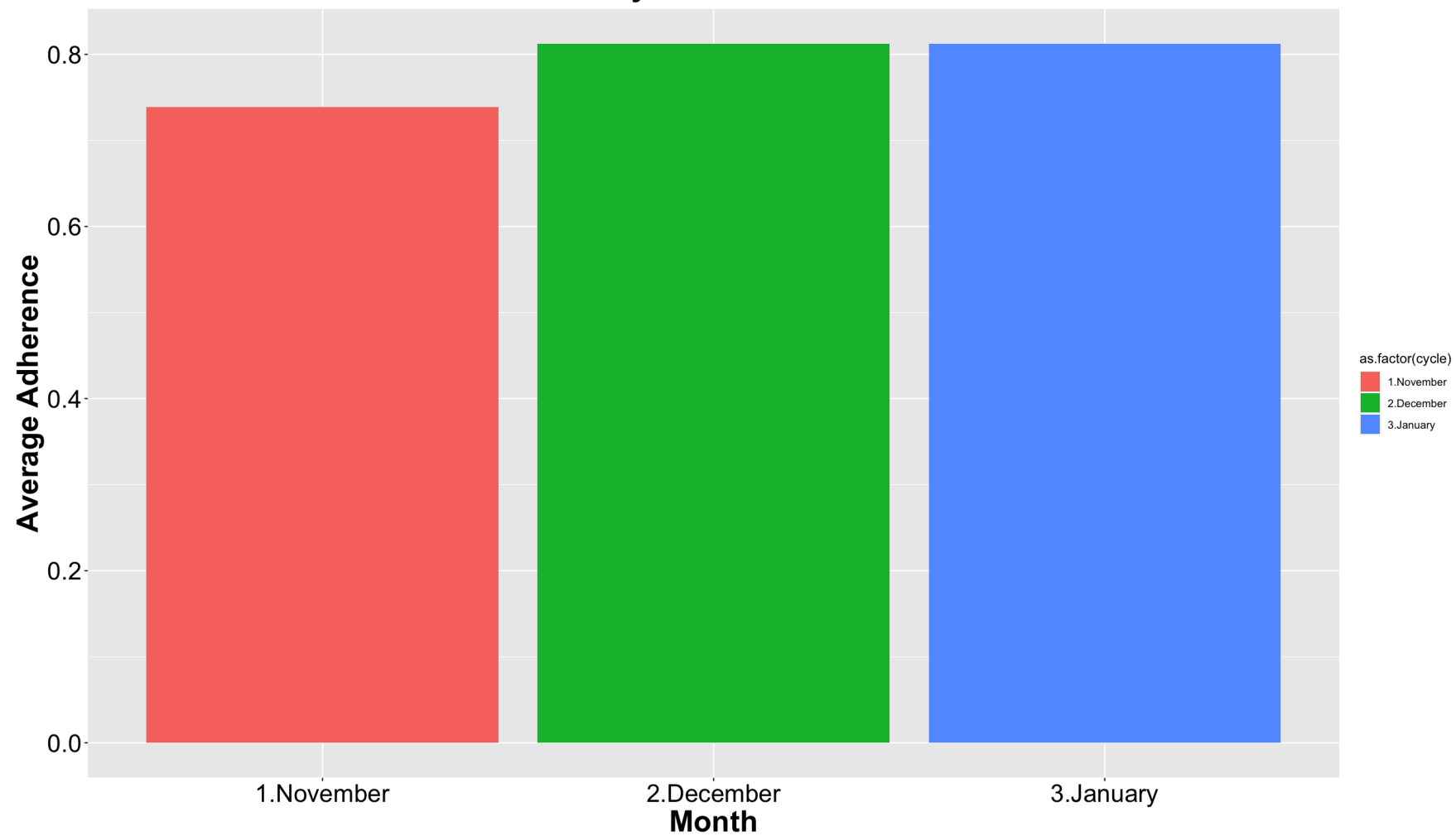
Adapt the Test

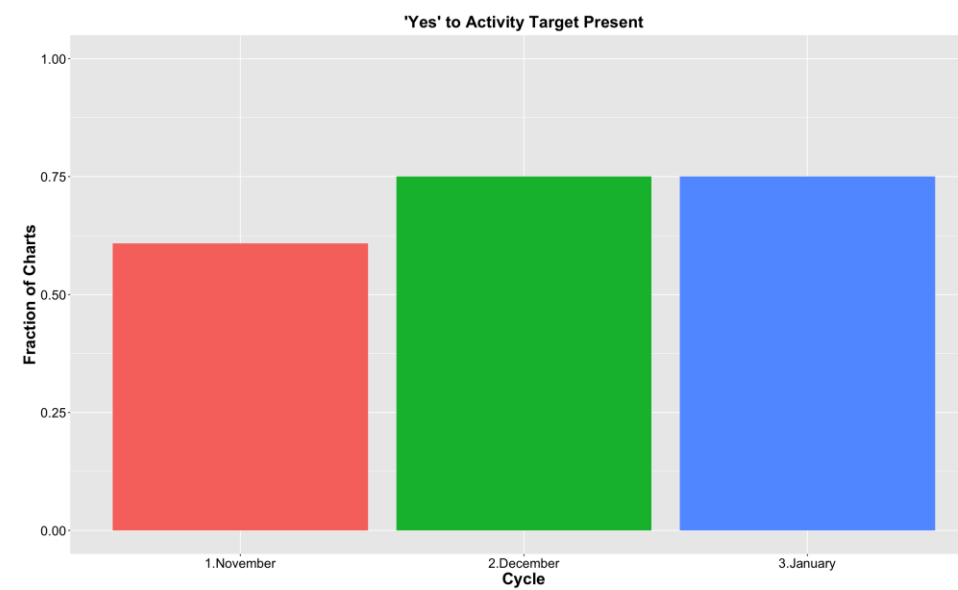
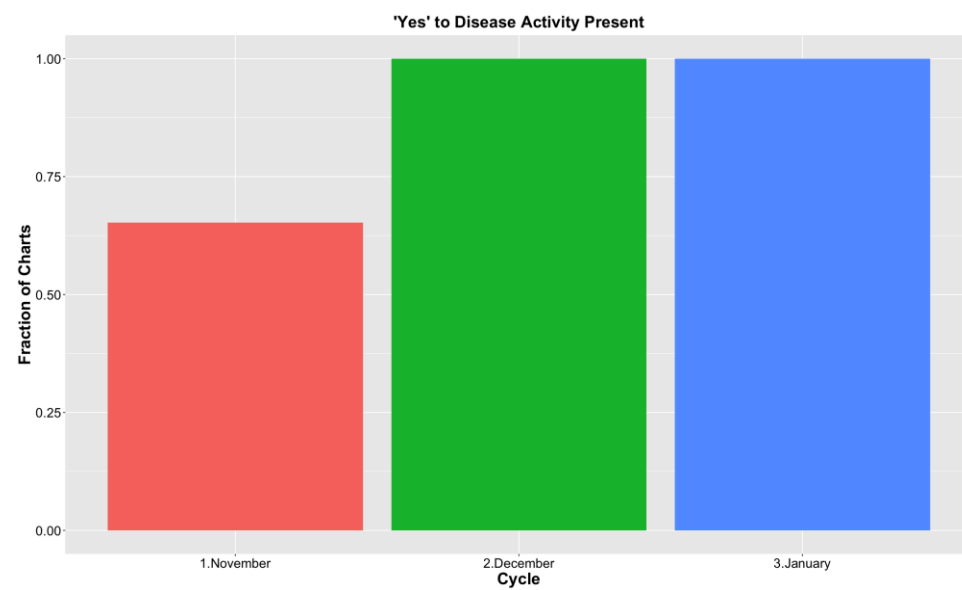
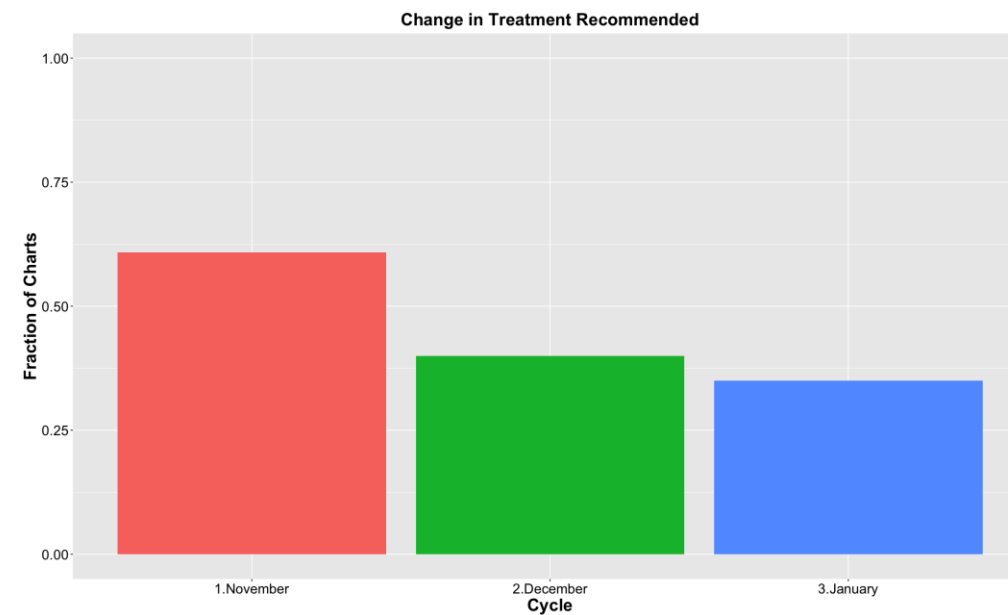
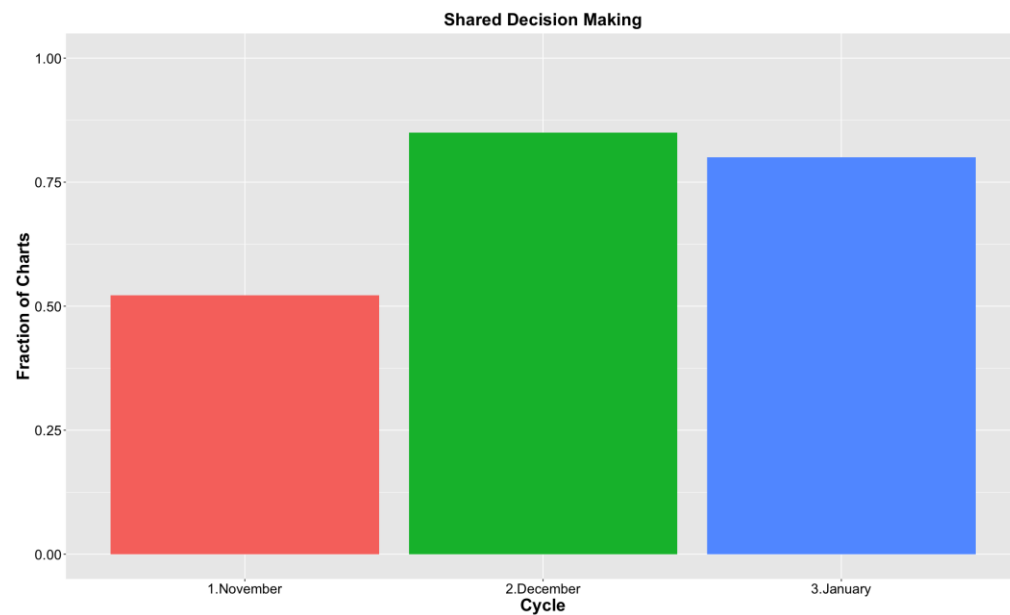
Abandon the Test

Plan for the next cycle. What changes are needed? If expanding or adapting, what will you do to continue your learning while beginning to spread the successes?

At this point we have found a way to distribute the R3, a vast majority of patients are completing it by the time the provider comes in the room. We see no issues..

Aderence by Month for Gundersen





PDSA Progress:

University of Iowa

University of Iowa PDSA

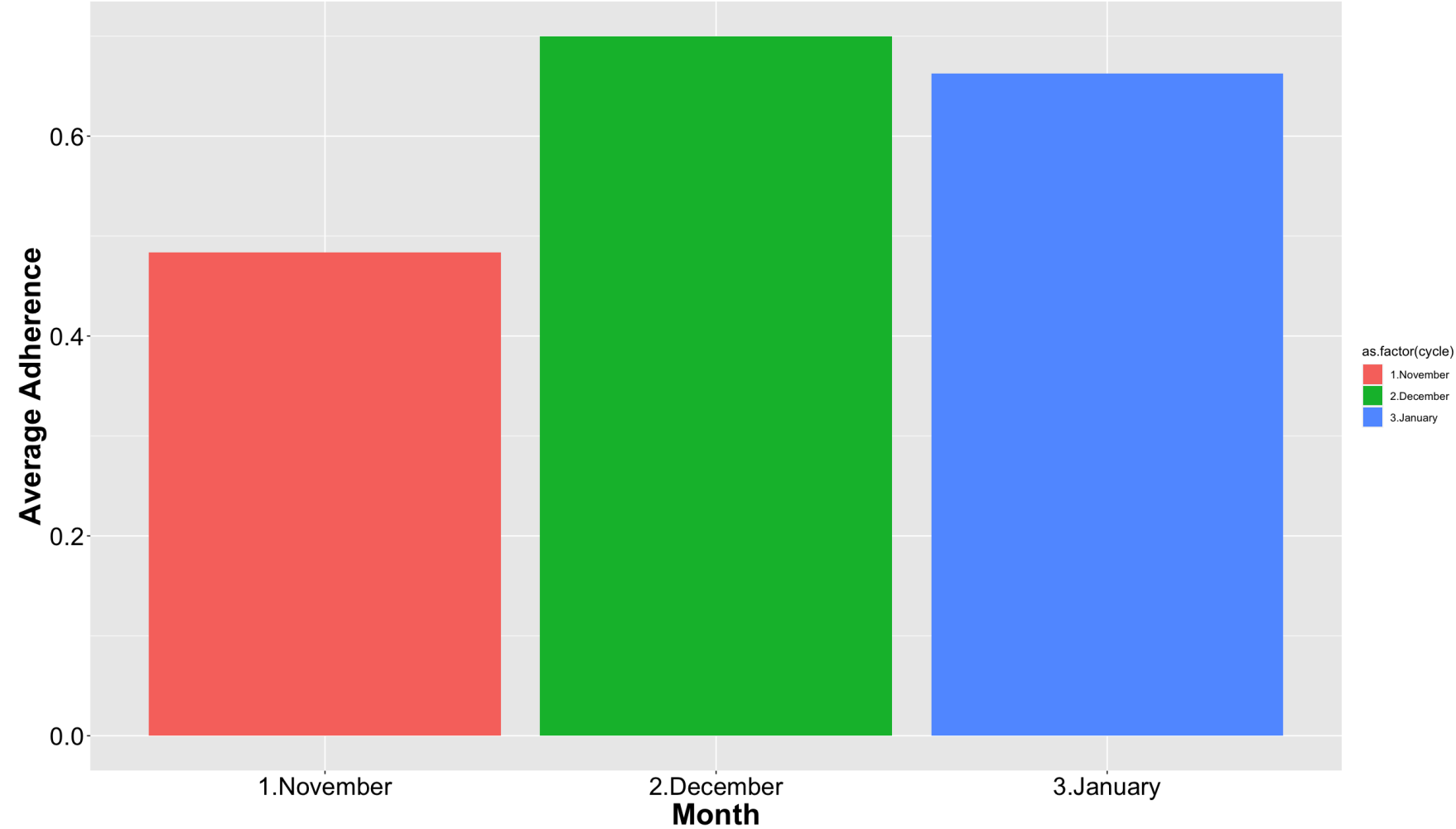
(November/December)

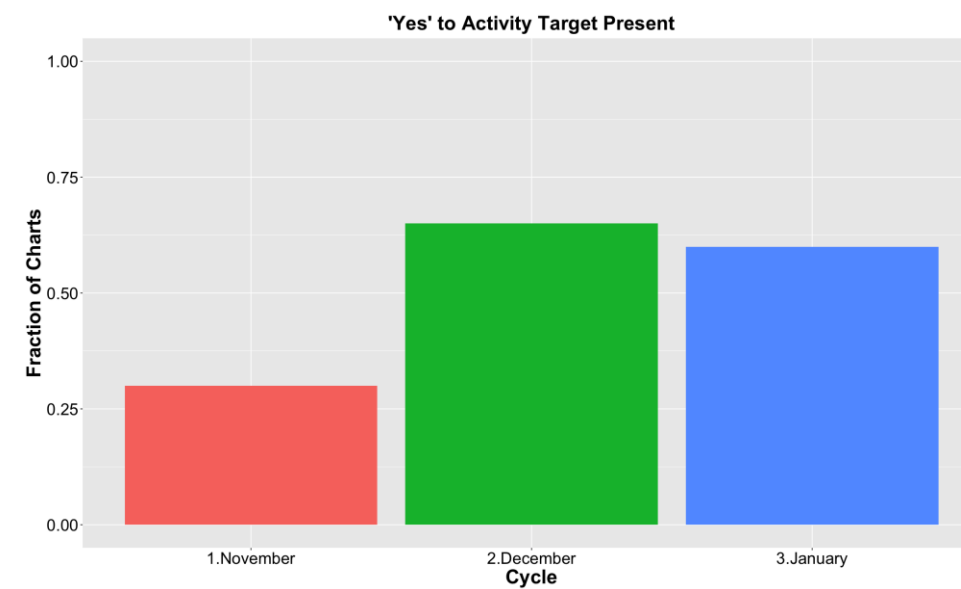
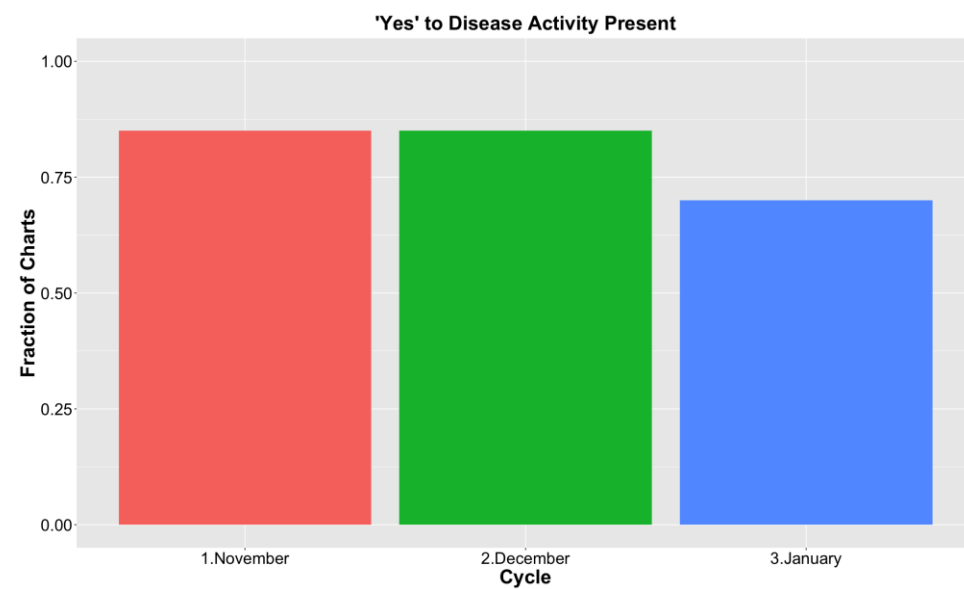
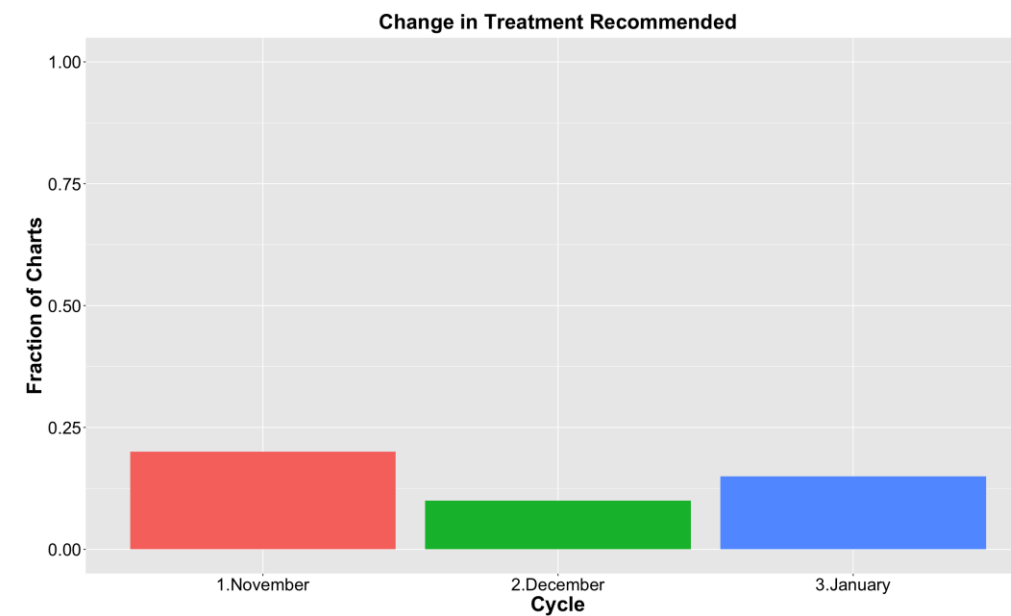
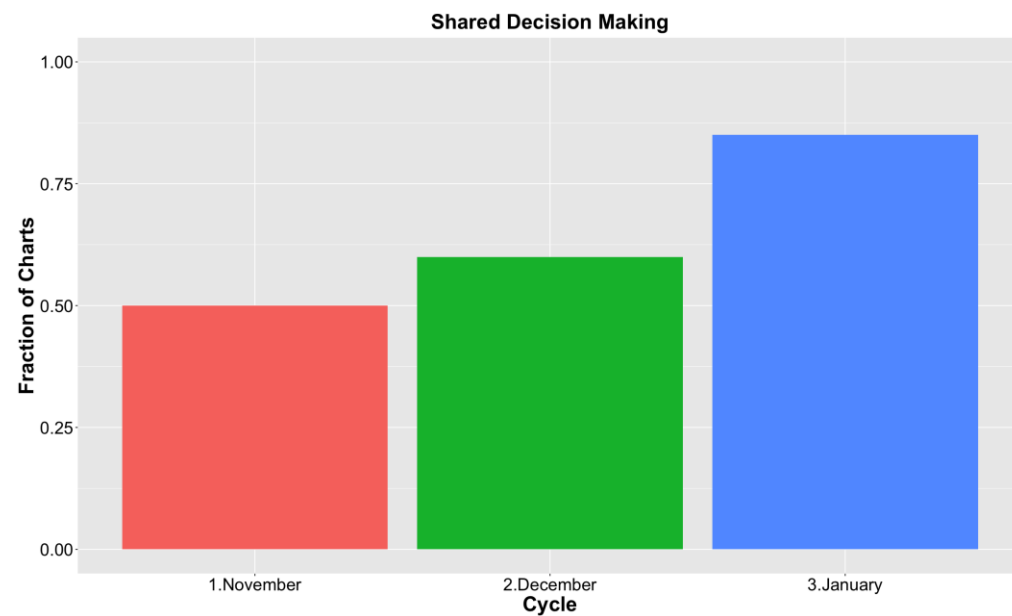
Title: Implement an Epic SmartPhrase for documenting DAM, T2T goal and SDM

PLAN
<p>What is the objective for this cycle?</p> <p>To create and implement a SmartPhrase in Epic for documenting key components of the TRACTION LC: 1) disease activity measure (DAM) used by provider, 2) T2T goal for patient, 3) shared-decision making statement pertaining to treatment change to achieve T2T.</p> <p>What do you predict will happen?</p> <p>This will allow each provider participating in the TRACTION LC to standardize their documentation to help implement T2T during their clinic visit with the patient. Additionally, this will optimize chart reviews.</p> <p>What is the plan for the cycle? What are the steps to execute the cycle, including data collection (who, what, where, when)?</p> <p>A member of our team (PL) will design a SmartPhrase and feedback will be given by the other team members (providers) so that we reach a consensus smart-phrase to be used in the future for all RA patient notes by the TRACTION LC providers.</p>

DO
<p>Carry out the cycle. What did you observe? Include descriptions of successful encounters, problems, and other special circumstances that may or may not have been part of the plan.</p> <p>We came up with a preliminary SmartPhrase which contained the essential parts of T2T. Our team discussed whether to use full sentences or medical abbreviations, which other providers and/or the billing/coding department might not be familiar with, as well as patients who have access to their notes and who might not understand the documentation.</p>
STUDY
<p>Summarize and analyze the observed results. What did you learn from this cycle?</p> <p>Documentation of the key components of T2T is essential to help guide discussion with the patient, but there are several ways of documenting which need to be optimized for streamlined use in our notes.</p> <p>Do the results agree with the predictions you listed in the “Plan” phase? (circle one)</p> <p><input checked="" type="radio"/> Yes <input type="radio"/> No</p>
ACT
<p>What action are you going to take as a result of this cycle? (circle one)</p> <p><input type="radio"/> Expand the Test <input checked="" type="radio"/> Adapt the Test <input type="radio"/> Abandon the Test</p> <p>Plan for the next cycle. What changes are needed? If expanding or adapting, what will you do to continue your learning while beginning to spread the successes?</p> <p>We will plan to adapt and modify our SmartPhrase such that we spell out some of the medical abbreviations (T2T, LDA, etc.). We will also add elements which should be documented in the shared decision making section (such as discussing risk, benefits, and side effects of medications).</p>

Aderence by Month for University of Iowa

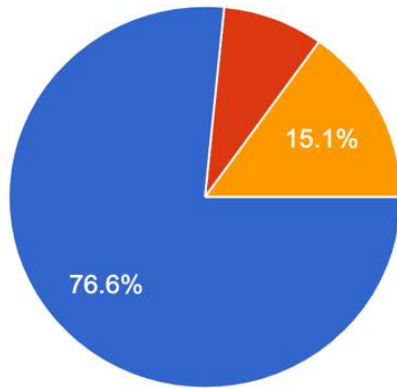






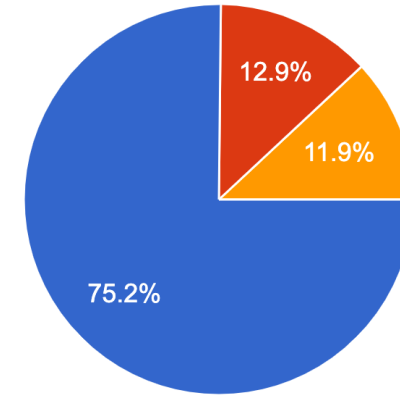
Virtual/ In Person Visit Comparison

December Webinar

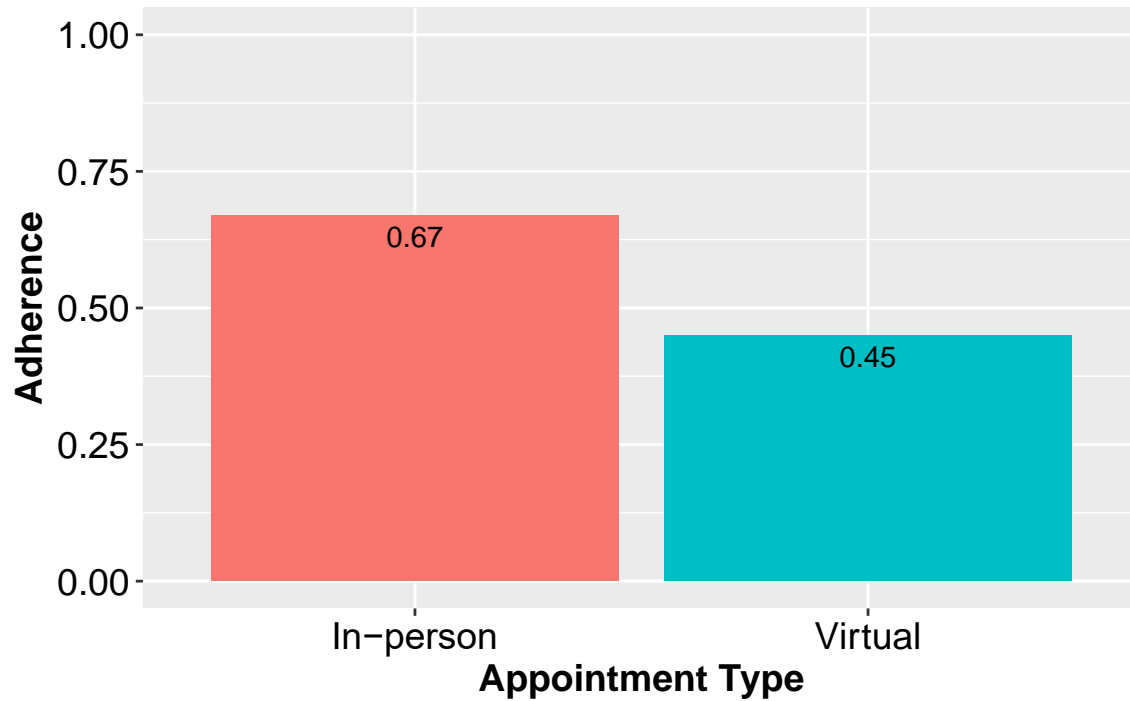


- In-person
- Virtual: phone
- Virtual: video

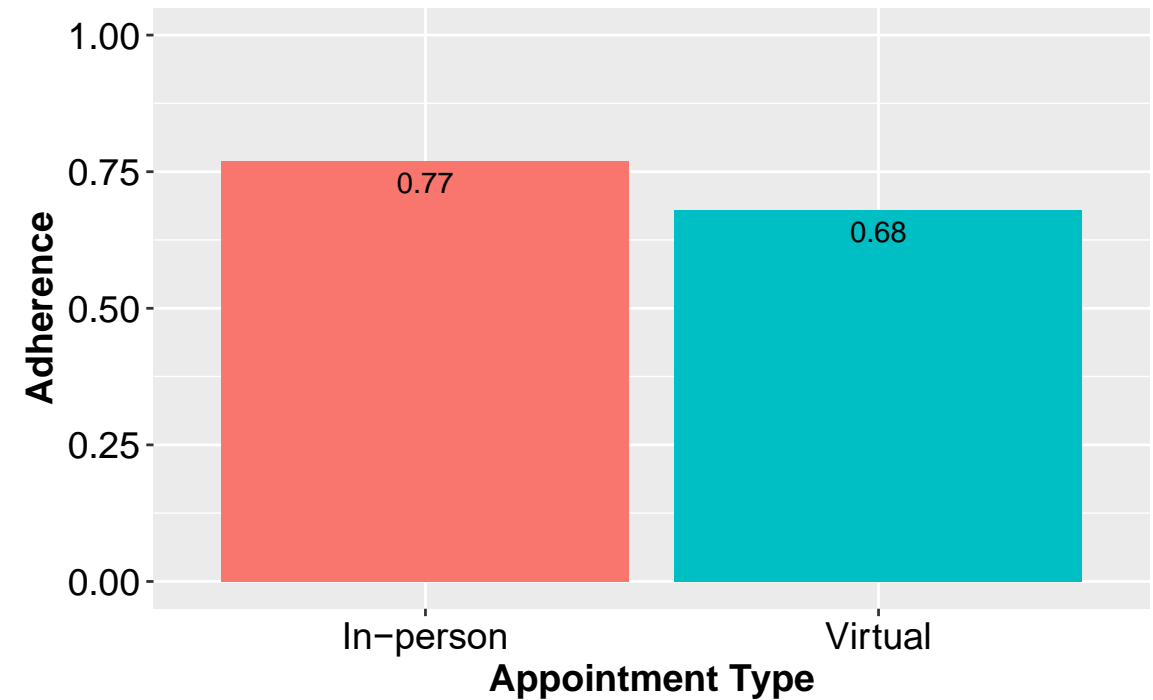
January Webinar



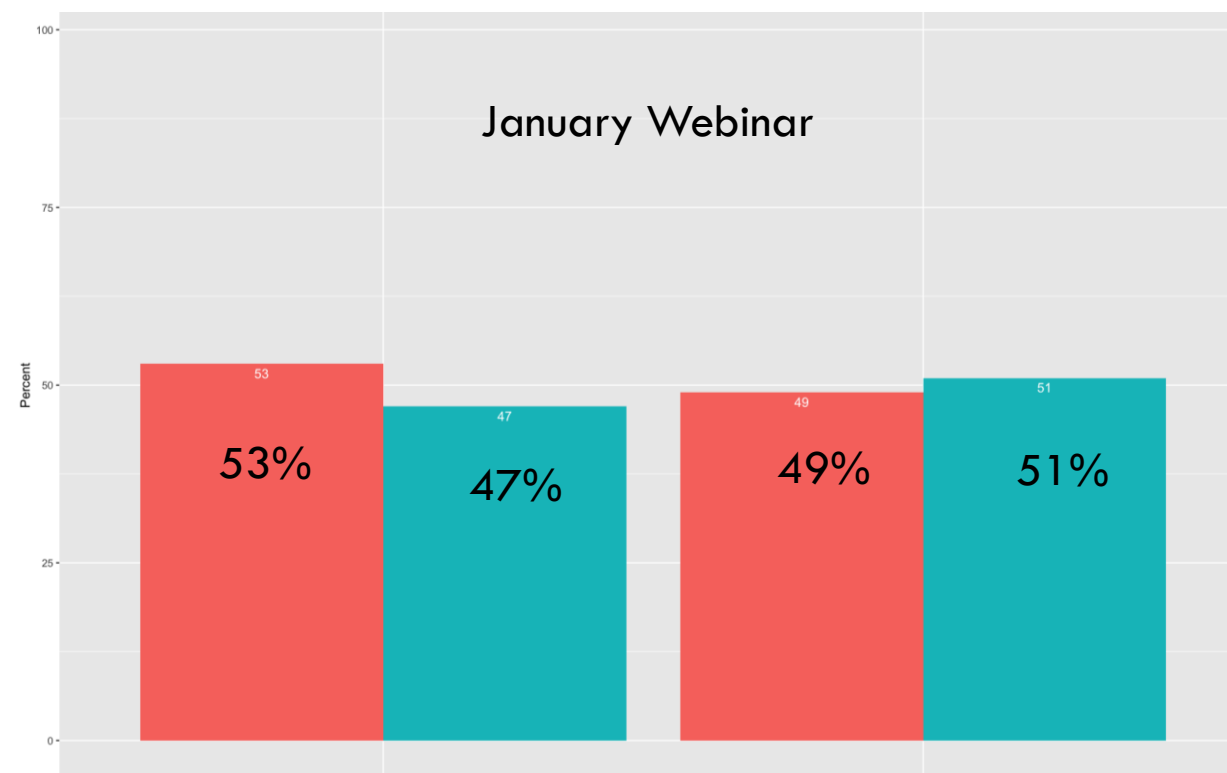
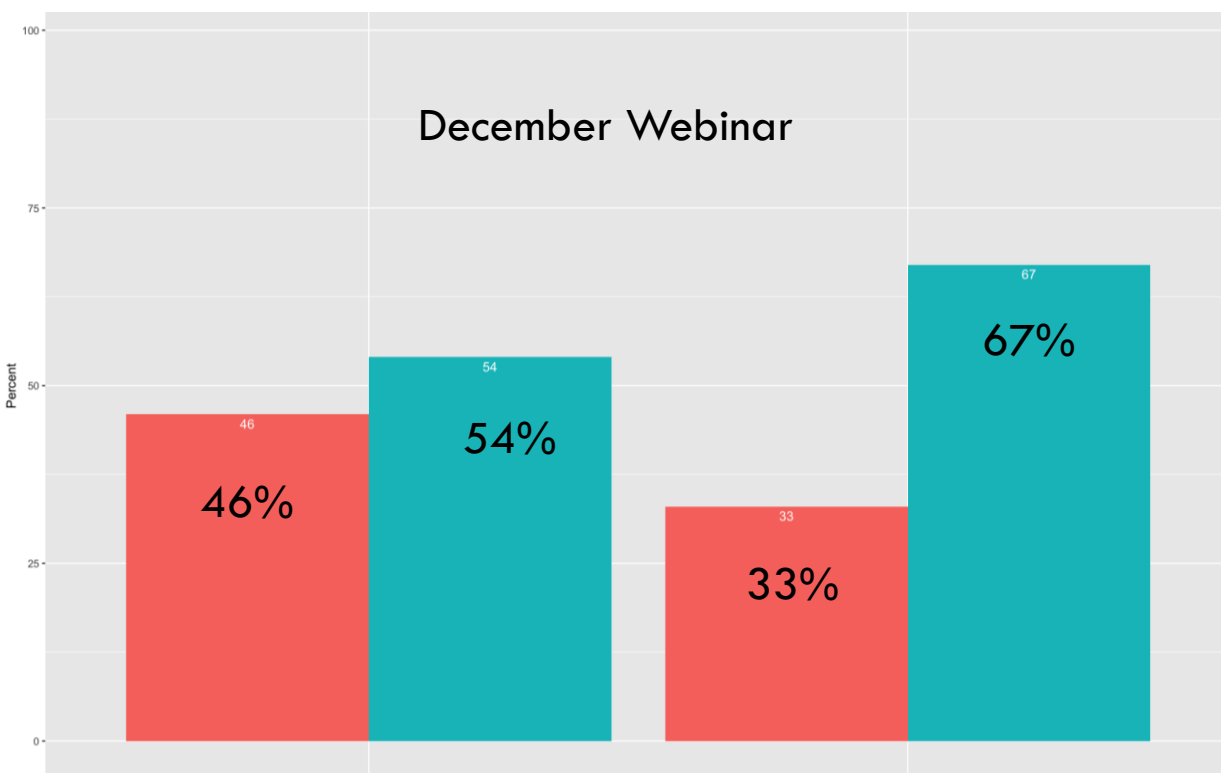
Adherence by Appointment Type for December



Adherence by Appointment Type for January



Comparison of Charts with Change in Treatment if **NOT** at Target by Appointment Type



Change in TRT



Change in Treatment

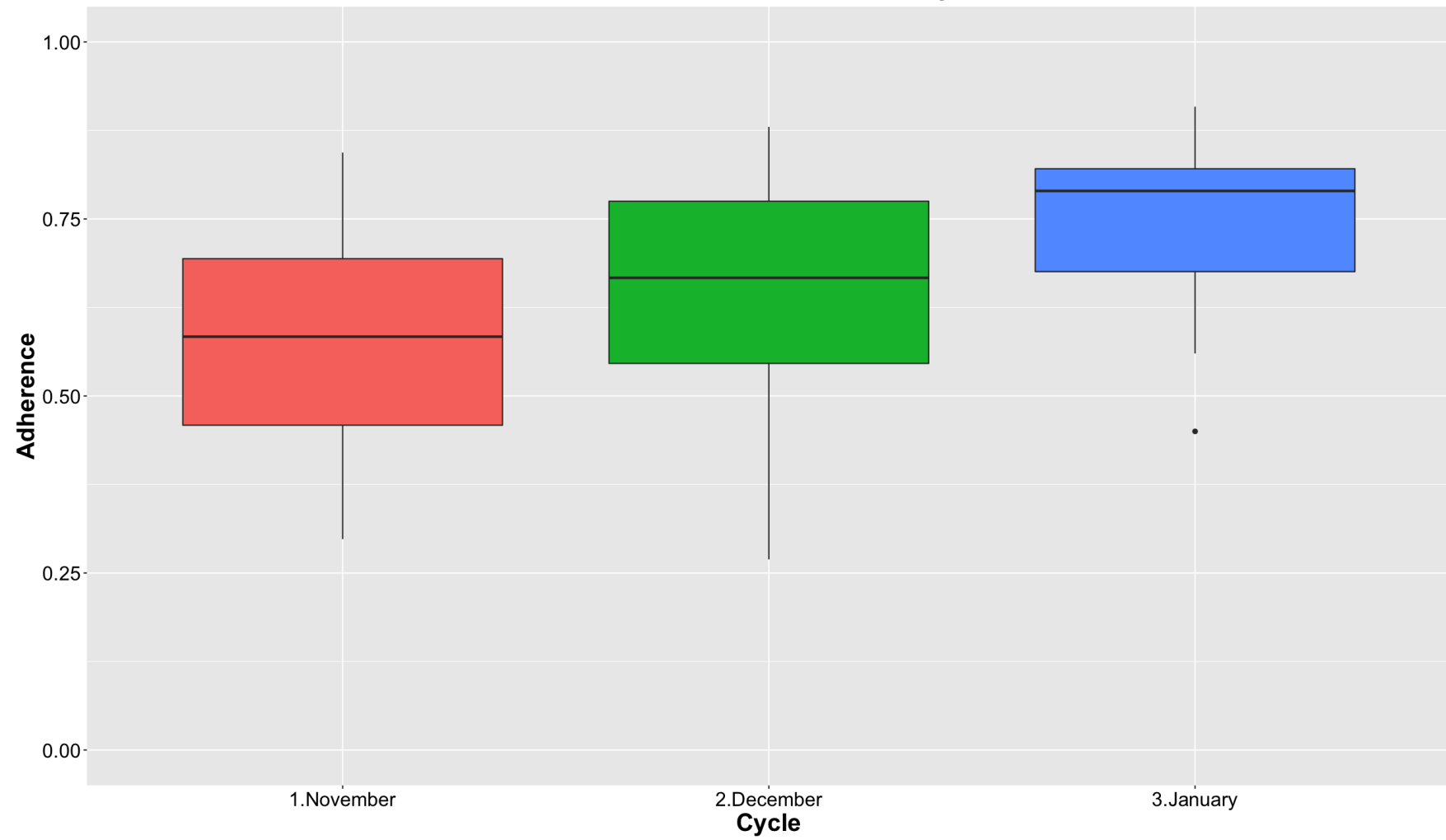
No Change in Treatment

Discussion

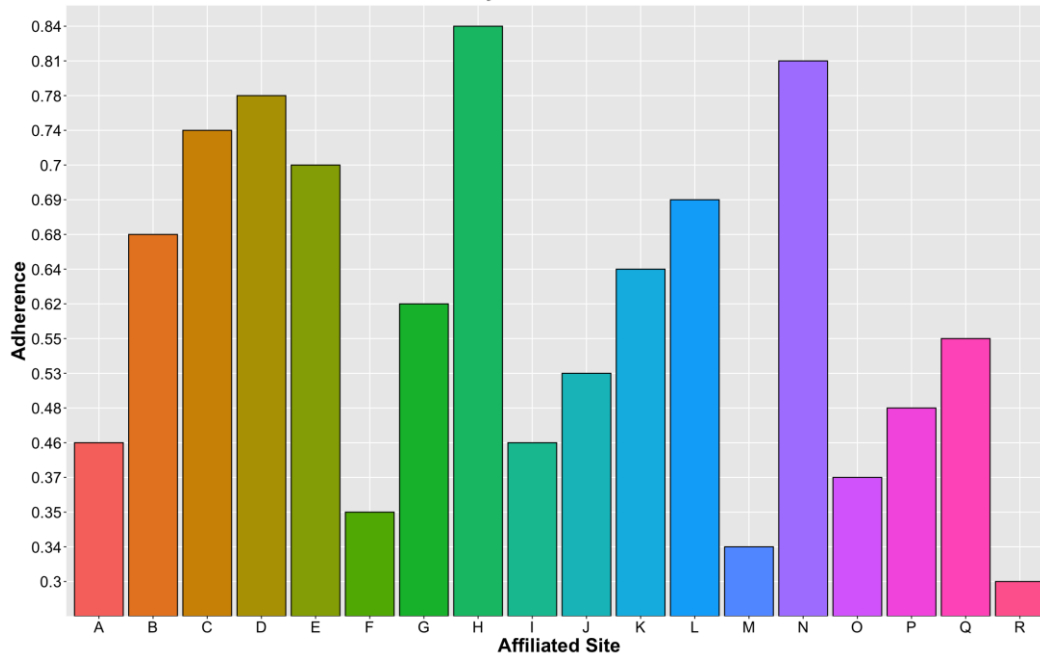
1. Using emailed PROs
2. Asking patients to do self-tender joint count on the video
3. Asking patients if they are at “target” for their activities, function and pain levels
4. Discussing med changes over two video calls: first call is used to give options and pro’s and con’s and second call to answer questions and make decisions
5. Using RN time to augment MD virtual visit

Data Visualizations and Month to Month Comparisons

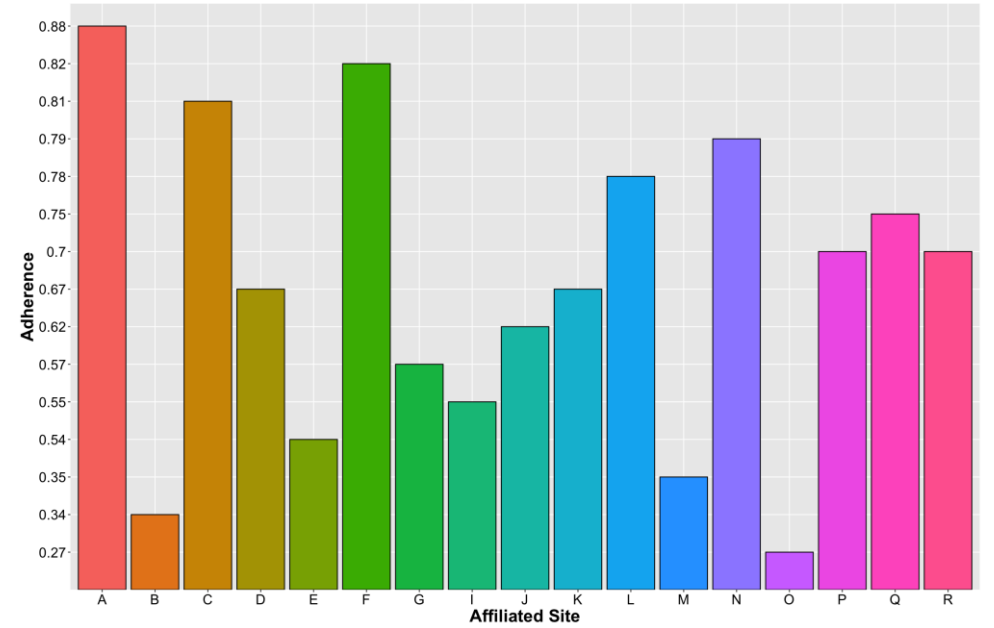
Median Adherence Across All Sites by Month



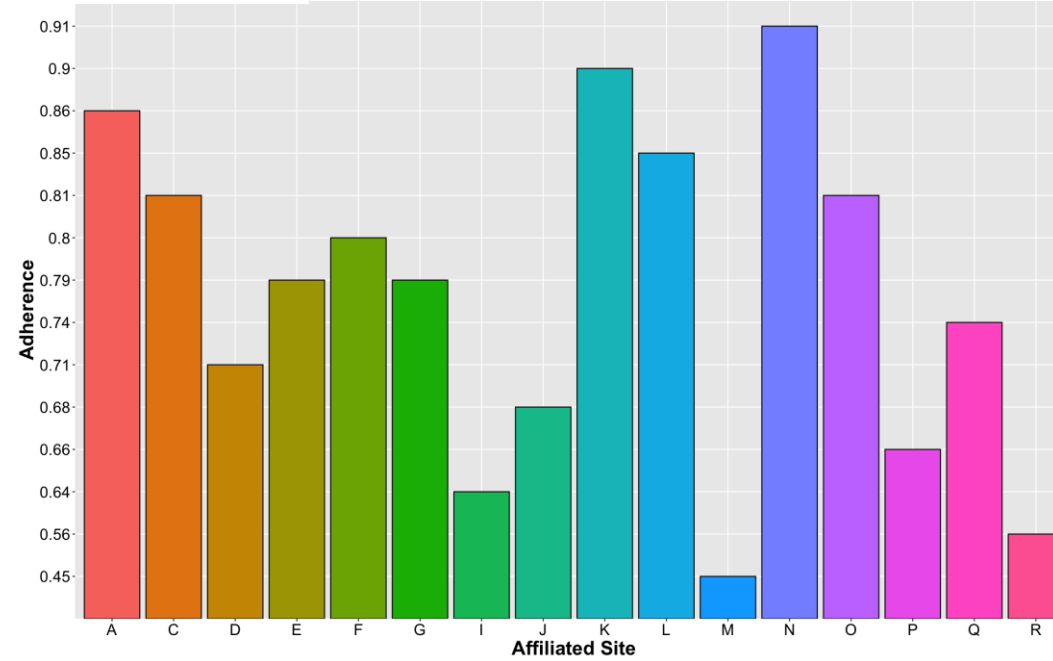
Adherence by Site for November Webinar



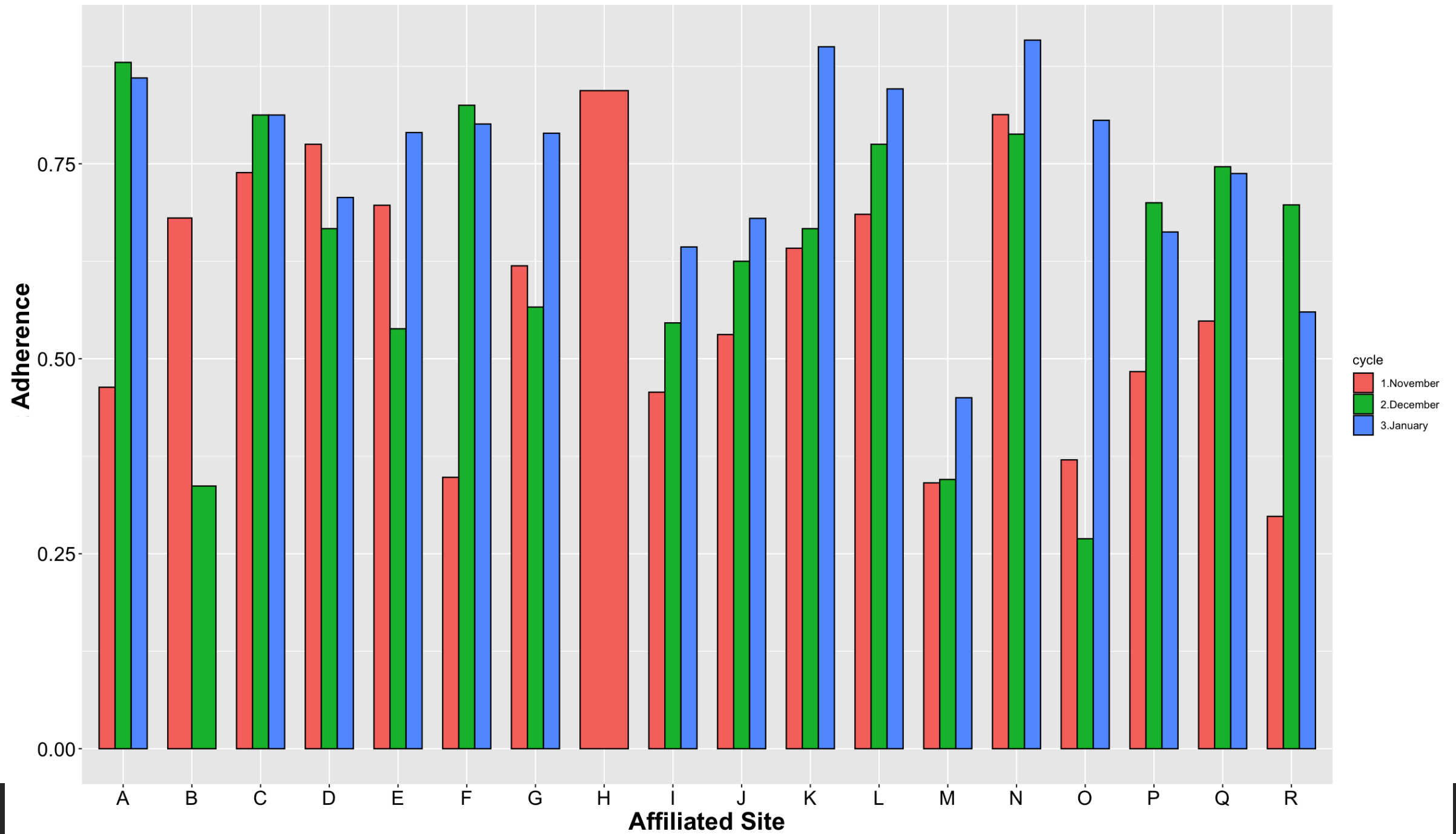
Adherence by Site for December Webinar



Adherence by Site for January Webinar

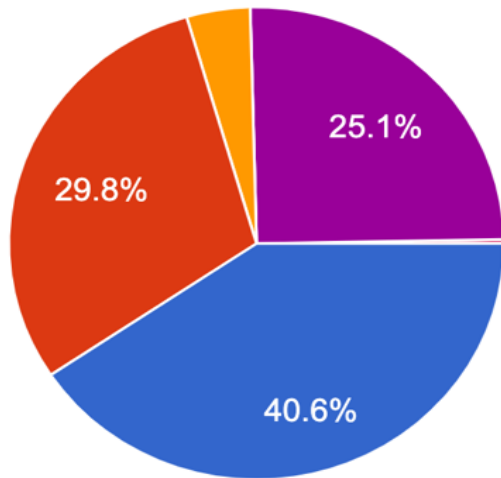


Adherence by Site by Month

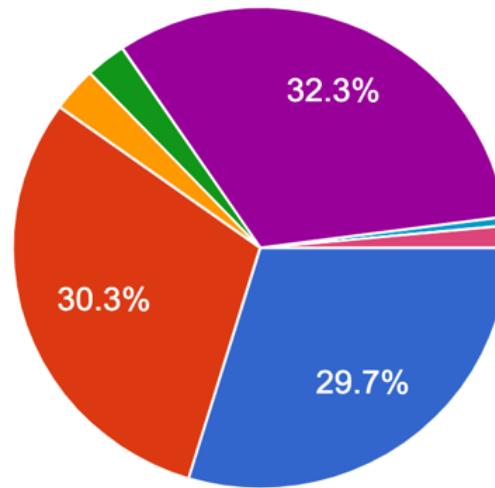


Does the note mention a disease activity?

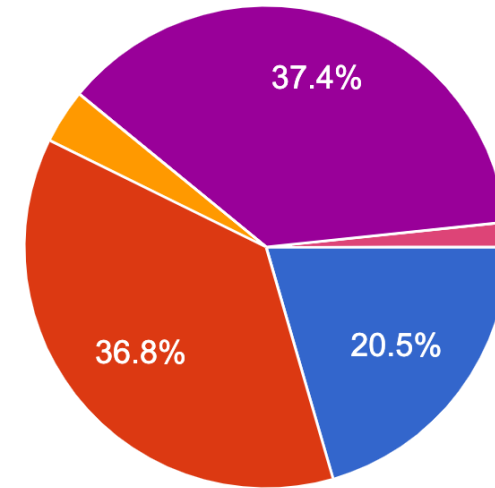
November Webinar



January Webinar

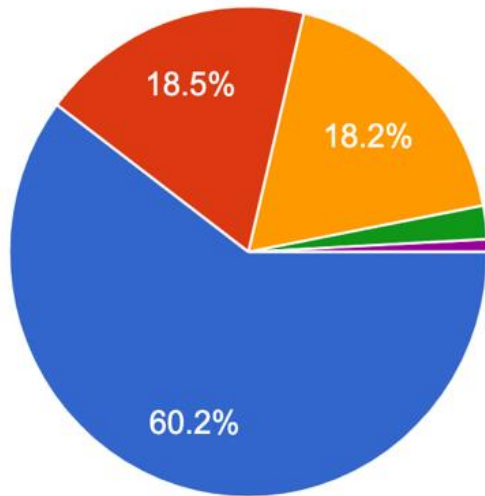


December Webinar

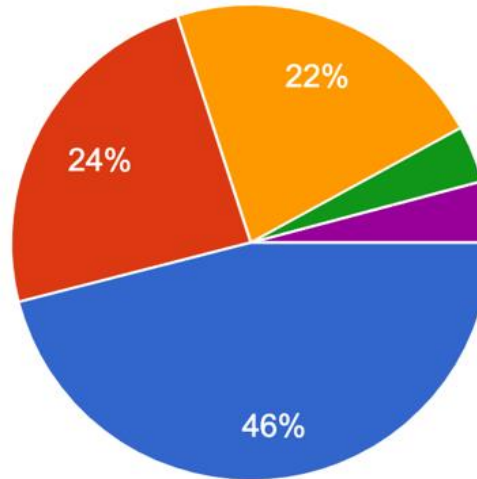


Is There a Treatment Target Noted?

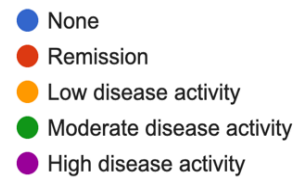
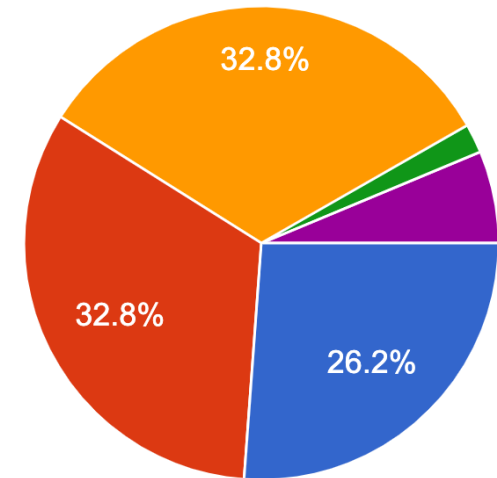
November Webinar



December Webinar

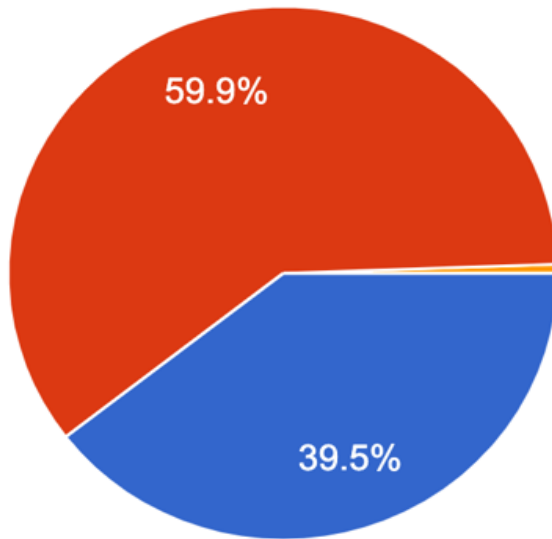


January Webinar

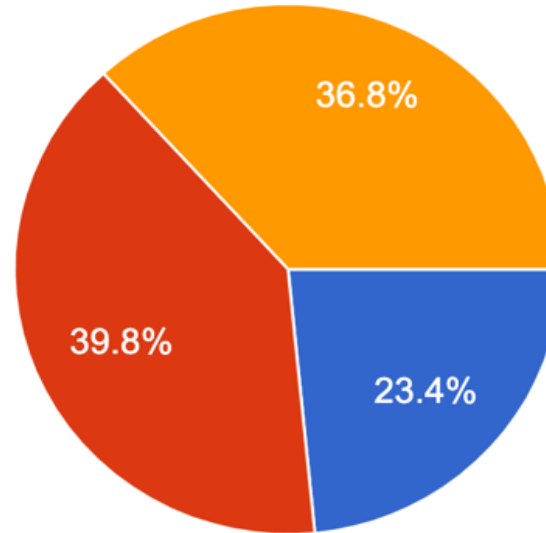


Is the patient at target?

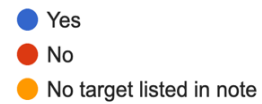
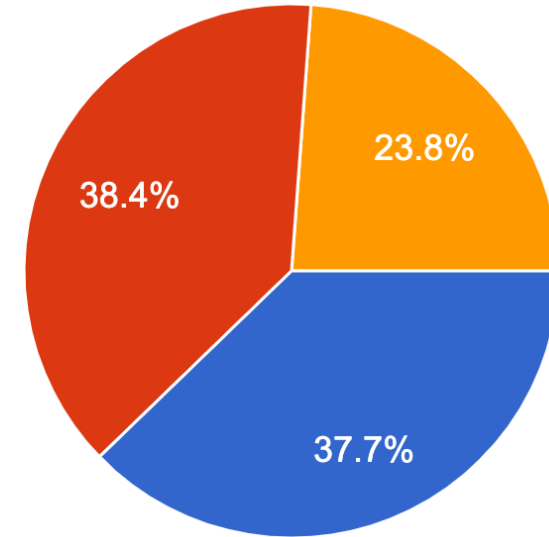
November Webinar



December Webinar

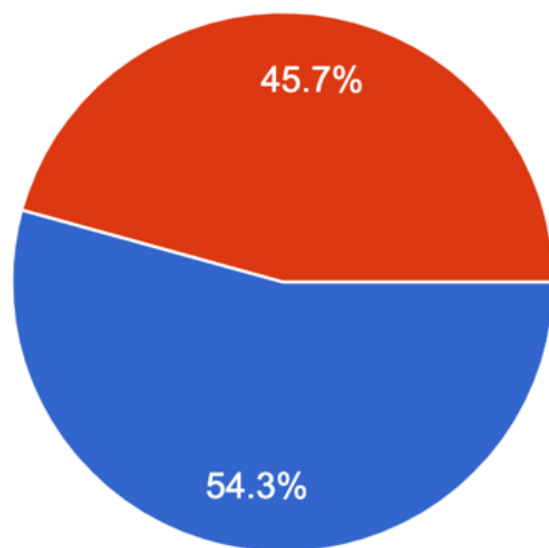


January Webinar

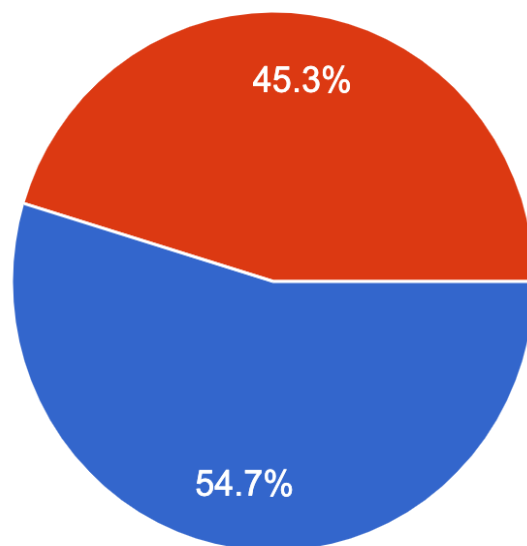


If the patient is not at target, was there a change in treatment?

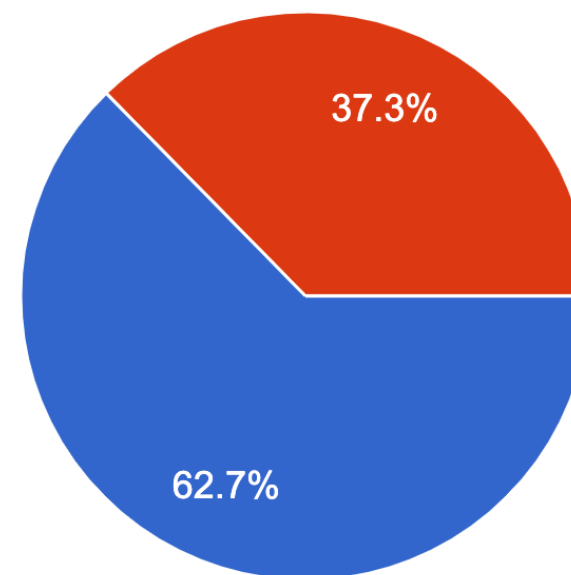
November Webinar



December Webinar



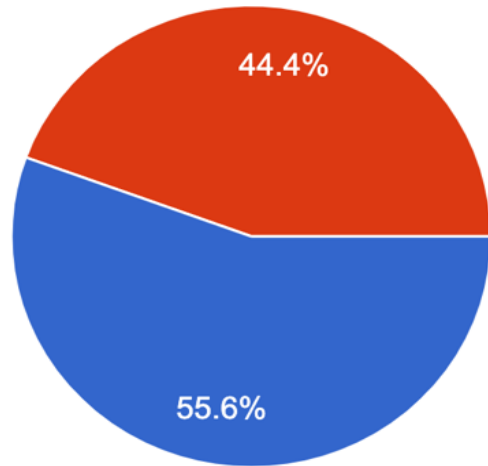
January Webinar



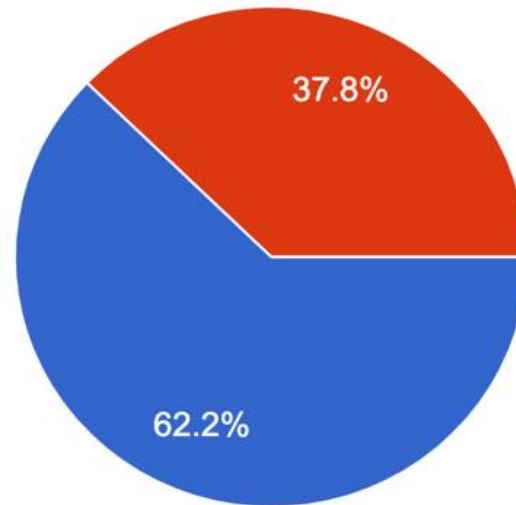
● Yes
● No

If a decision about treatment or treatment target was made, is there evidence of Shared Decision Making?

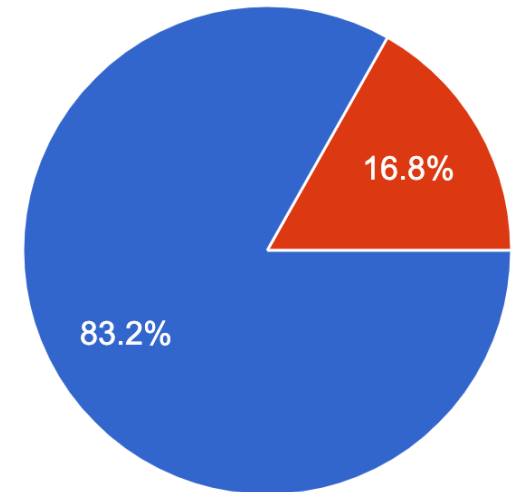
November Webinar



December Webinar

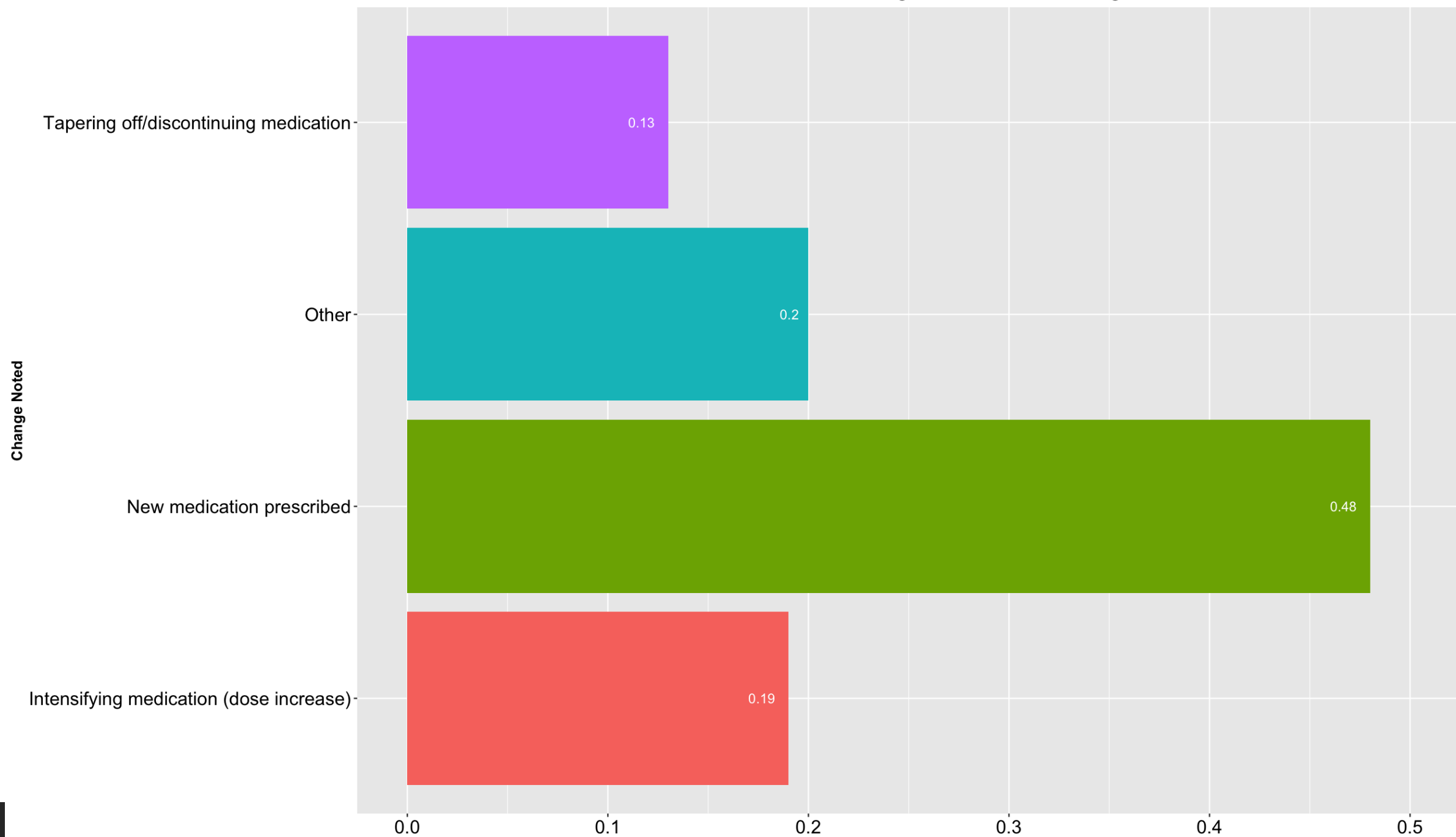


January Webinar

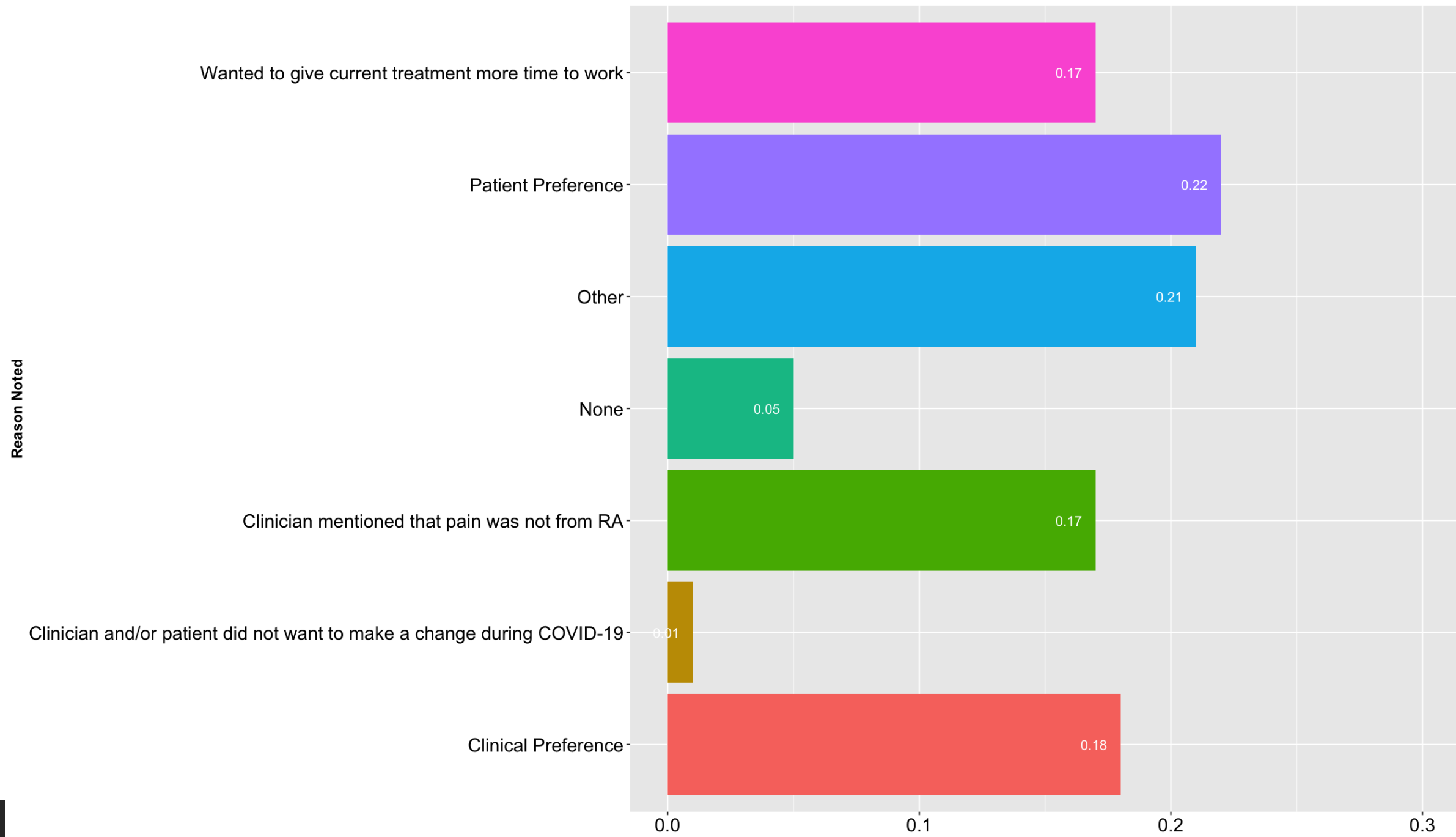


● Yes
● No

If There Was a Treatment Change Noted, What was that Change?

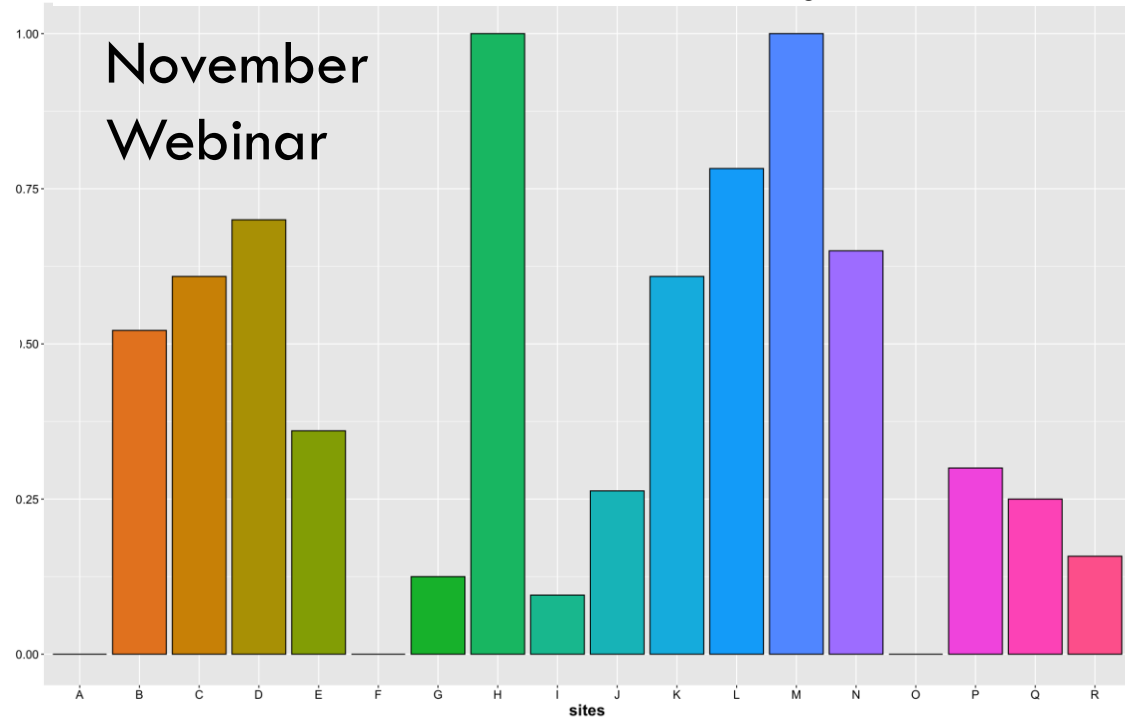


If NOT at target and NO treatment change was recorded, is there a reason noted for this?

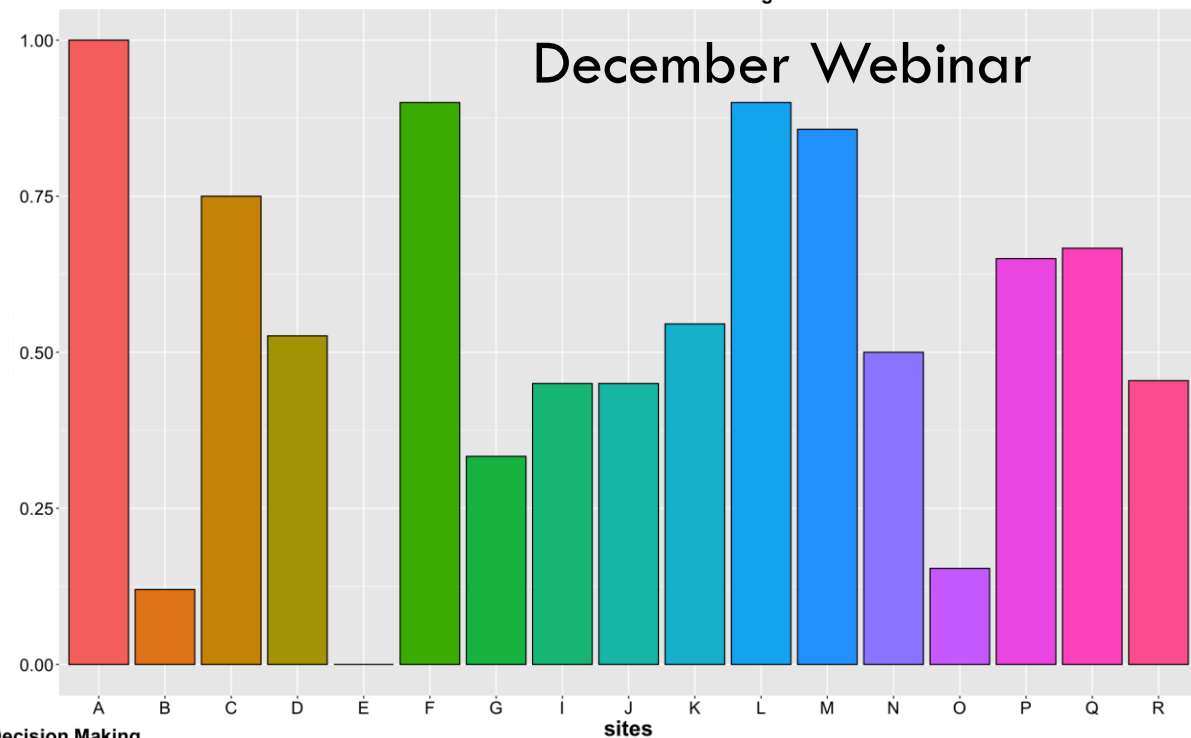


Adherence Breakdown Comparisons

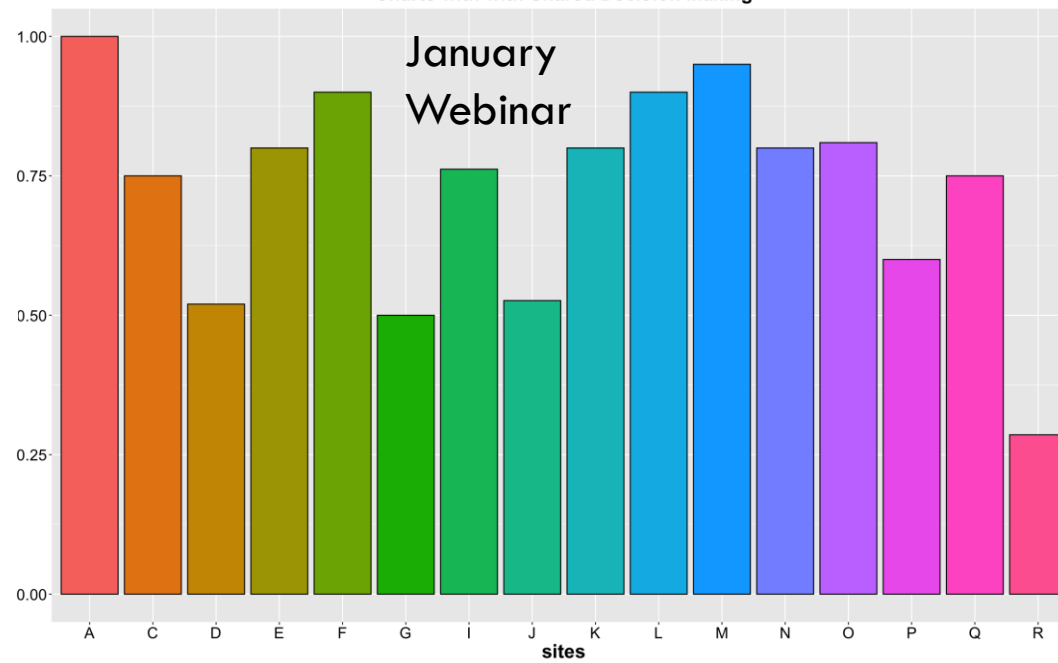
Charts with with Shared Decision Making



Charts with with Shared Decision Making

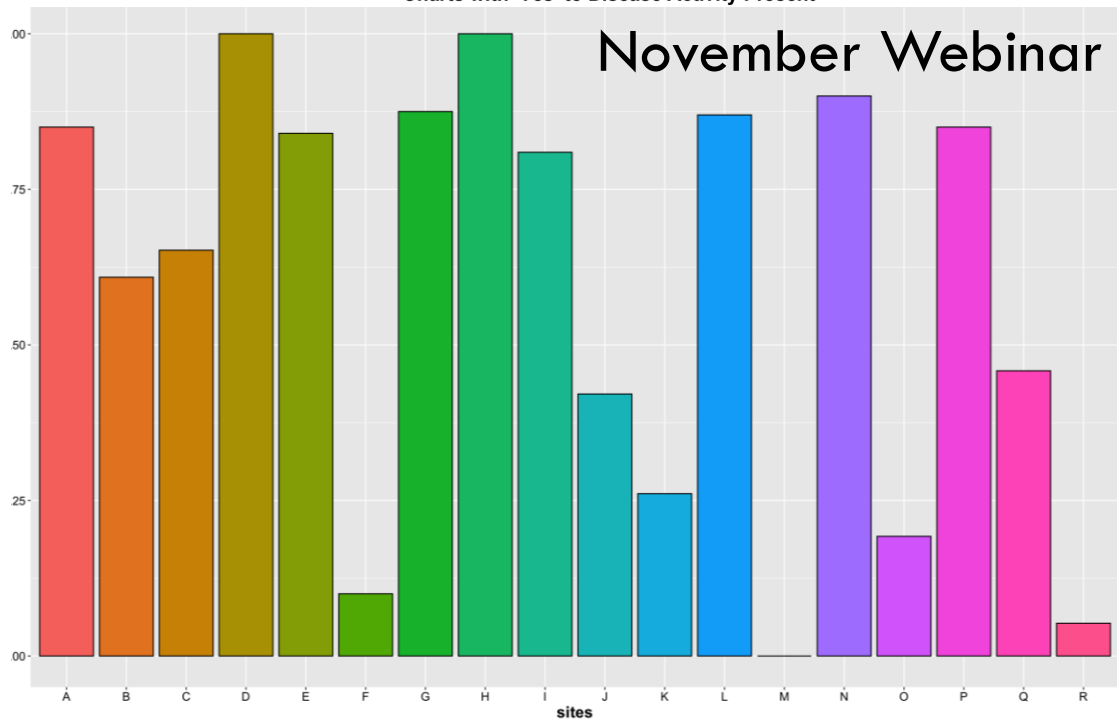


Charts with with Shared Decision Making



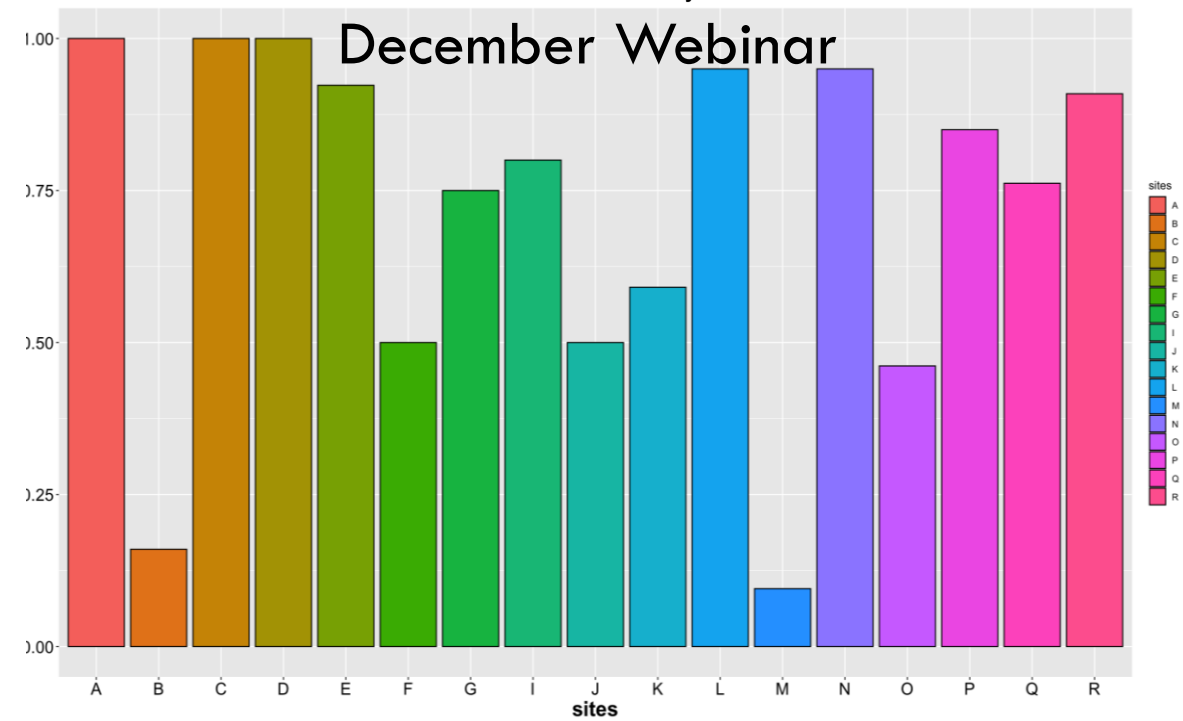
Charts with 'Yes' to Disease Activity Present

November Webinar



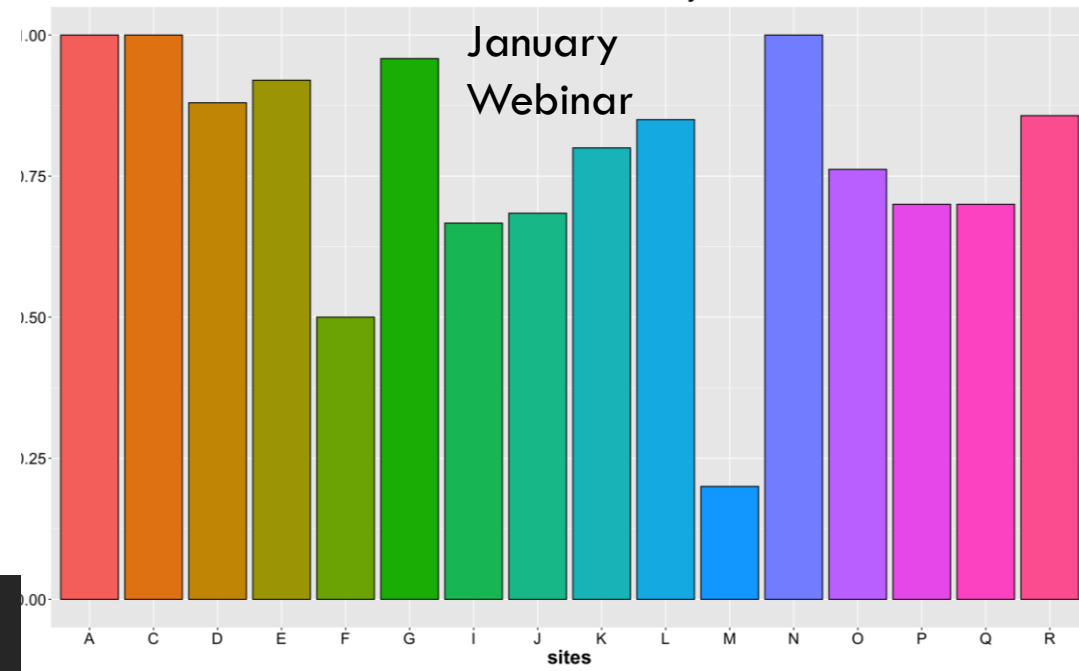
Charts with 'Yes' to Disease Activity Present

December Webinar



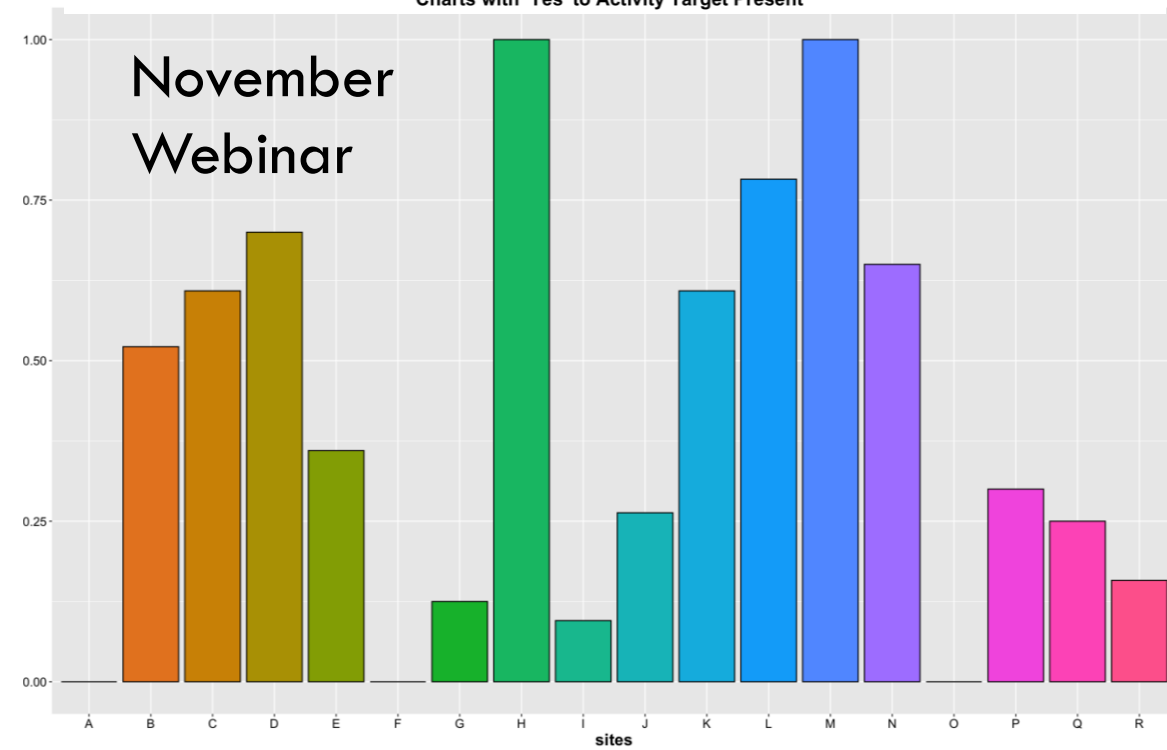
Charts with 'Yes' to Disease Activity Present

January Webinar



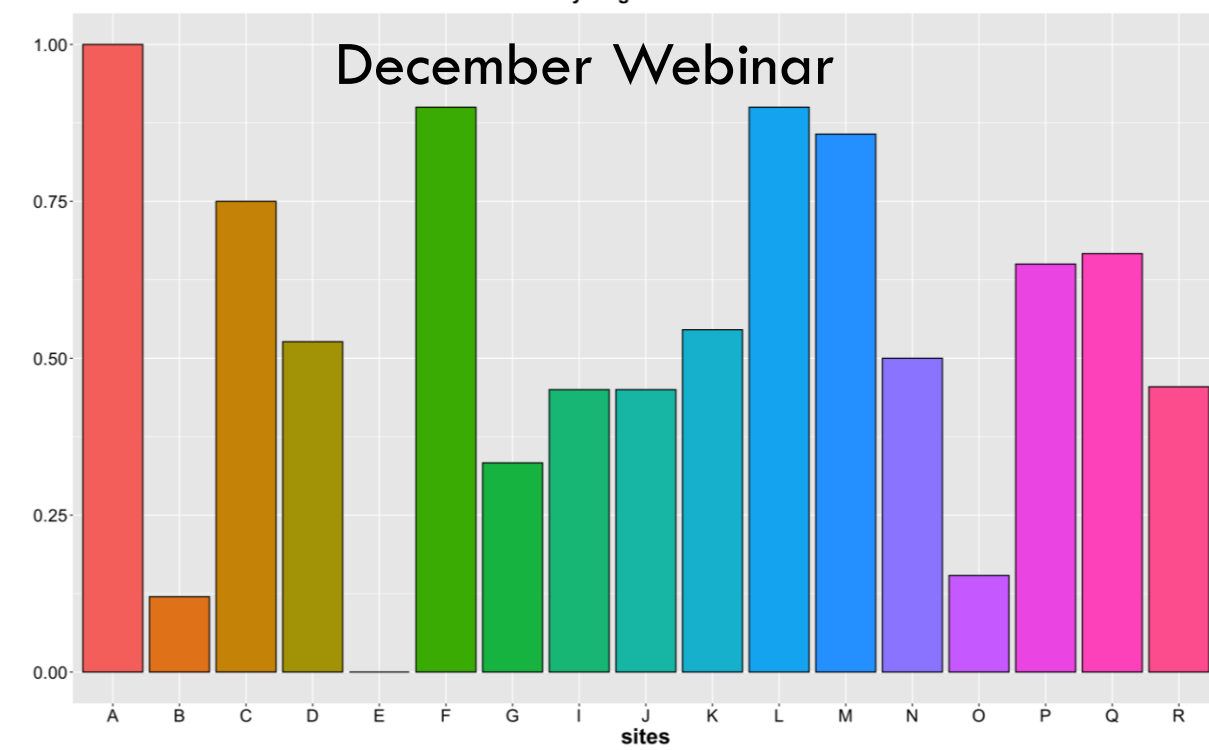
Charts with 'Yes' to Activity Target Present

November Webinar



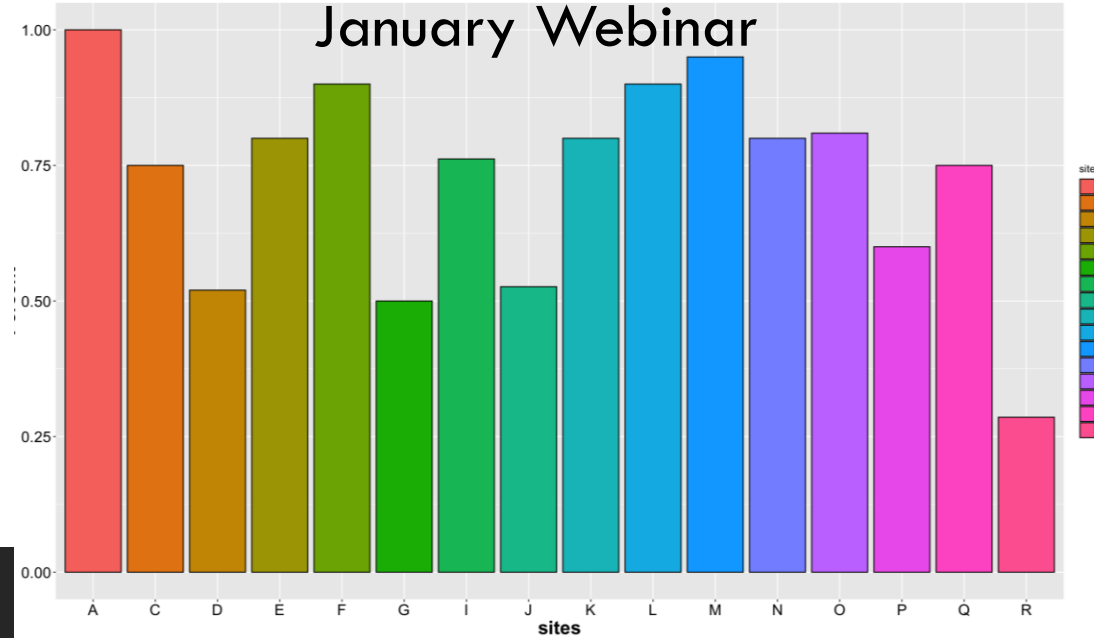
Charts with 'Yes' to Activity Target Present

December Webinar



Charts with 'Yes' to Activity Target Present

January Webinar



sites

- A
- B
- C
- D
- E
- F
- G
- H
- I
- J
- K
- L
- M
- N
- O
- P
- Q
- R

Thank you!
